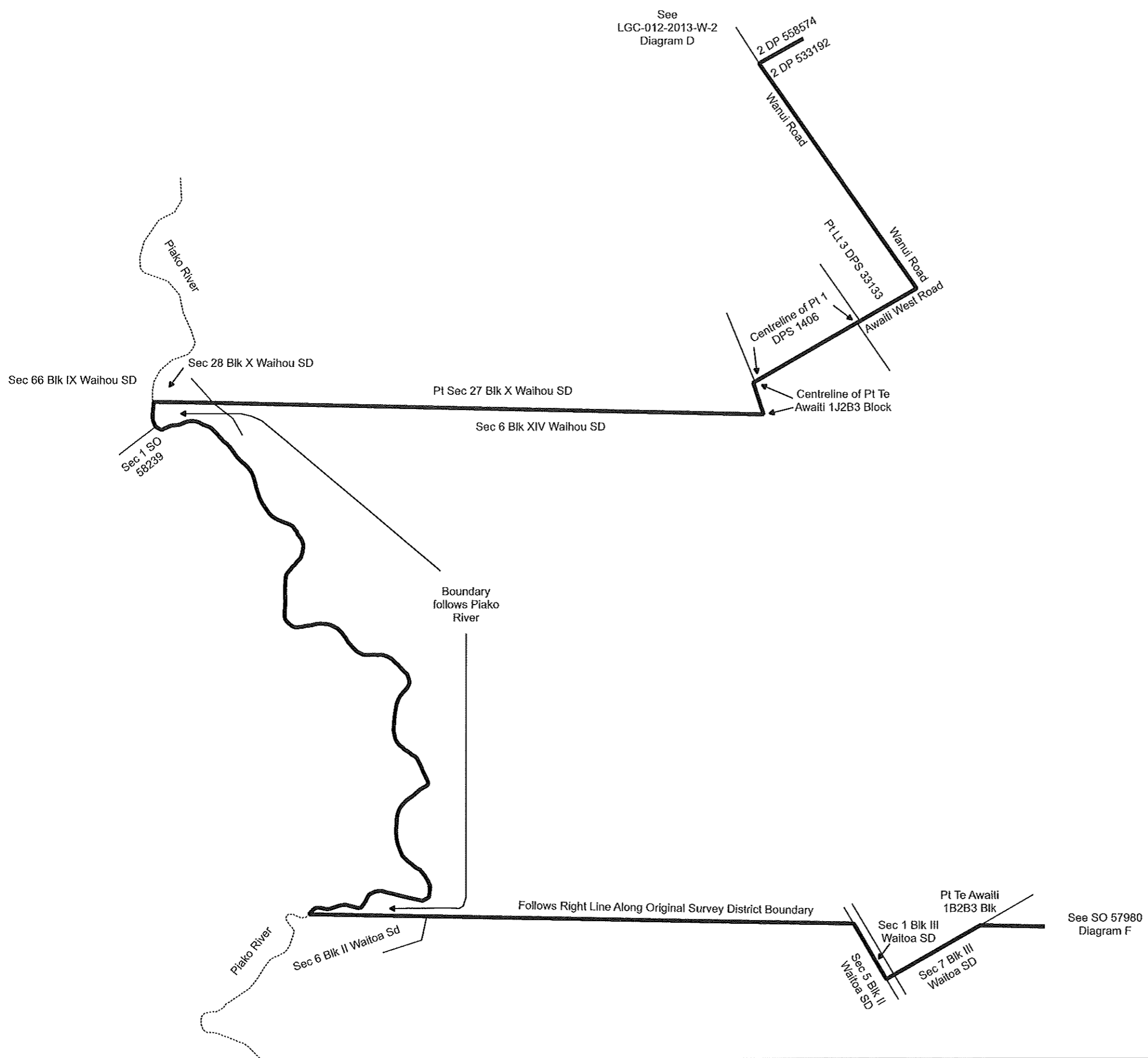


Notes:

1. Coordinates are in terms of New Zealand Transverse Mercator 2000 (NZTM).
2. All seaward boundaries follow Mean Low Water Springs but cross the mouths of all rivers, streams, inlets and estuaries except where shown otherwise.
3. Where a boundary is shown along a river or road it follows the middle line of the physical river or legal road unless otherwise shown.



- Notes:
1. Coordinates are in terms of New Zealand Transverse Mercator 2000 (NZTM).
 2. All seaward boundaries follow Mean Low Water Springs but cross the mouths of all rivers, streams, inlets and estuaries except where shown otherwise.
 3. Where a boundary is shown along a river or road it follows the middle line of the physical river or legal road unless otherwise shown.



Land District: South Auckland

HAURAKI DISTRICT PAEROA GENERAL WARD

TERRITORIAL AUTHORITY: Hauraki District
Compiled by Independent Election Services Ltd
Not to Scale Date February 2025



- Notes:
1. Coordinates are in terms of New Zealand Transverse Mercator 2000 (NZTM).
 2. All seaward boundaries follow Mean Low Water Springs but cross the mouths of all rivers, streams, inlets and estuaries except where shown otherwise.
 3. Where a boundary is shown along a river or road it follows the middle line of the physical river or legal road unless otherwise shown.

Diagram A

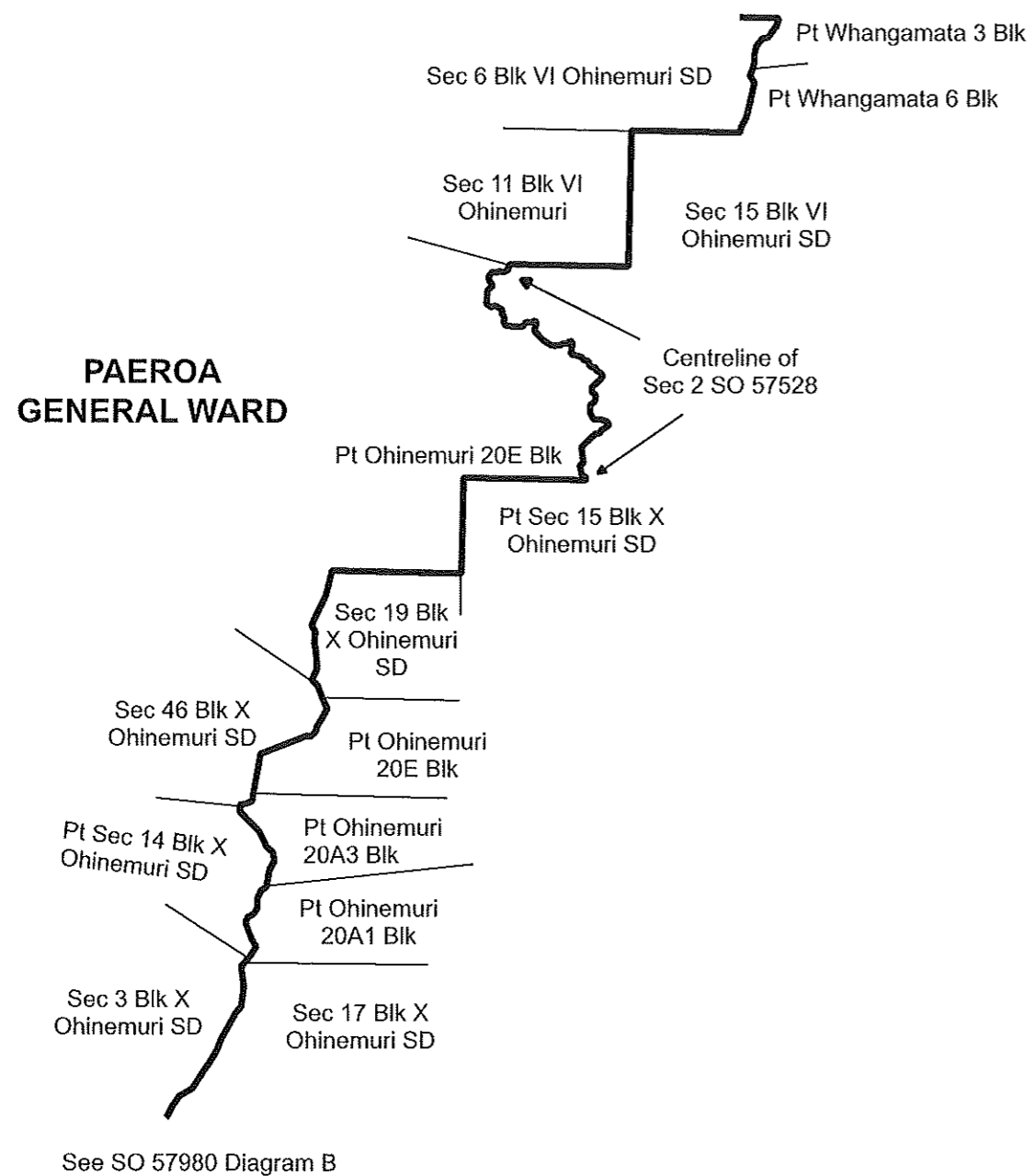
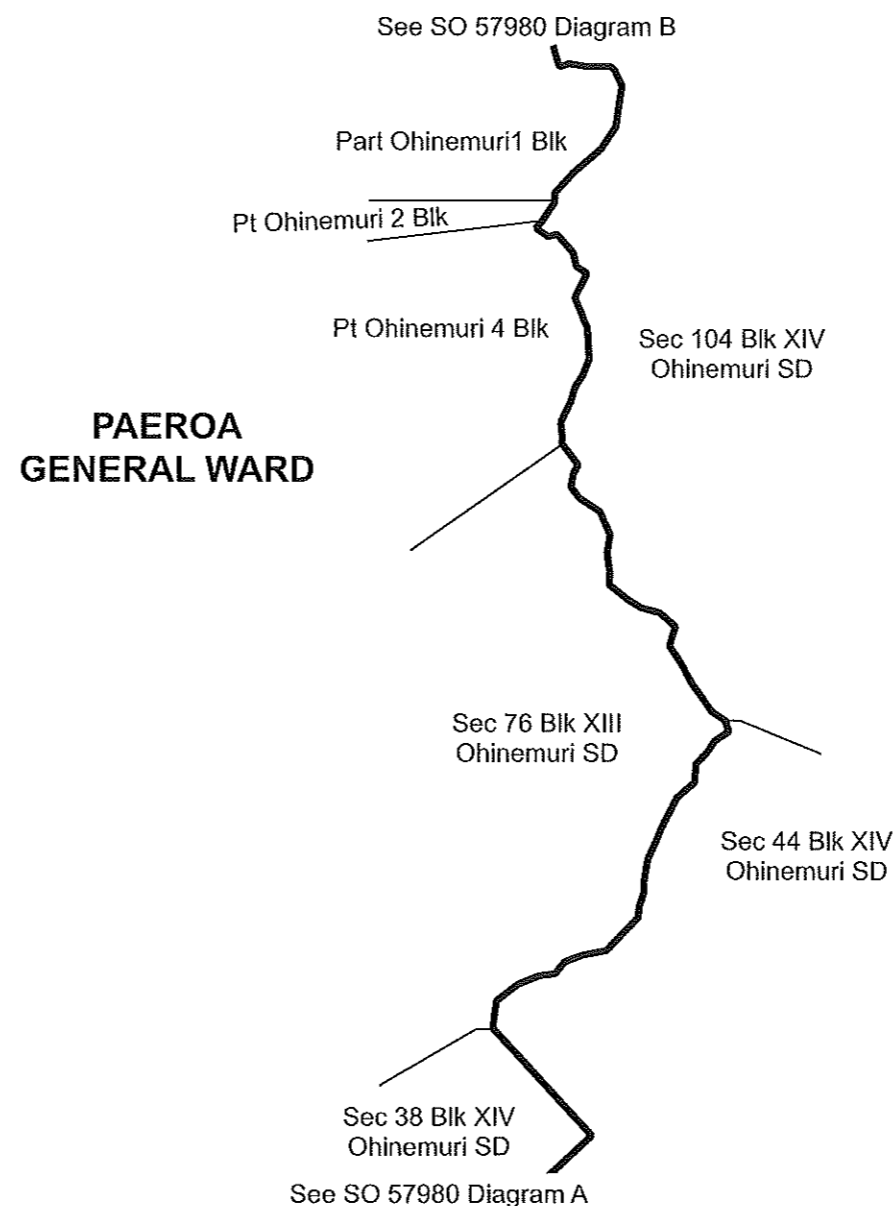


Diagram B





- Notes:
1. Coordinates are in terms of New Zealand Transverse Mercator 2000 (NZTM).
 2. All seaward boundaries follow Mean Low Water Springs but cross the mouths of all rivers, streams, inlets and estuaries except where shown otherwise.
 3. Where a boundary is shown along a river or road it follows the middle line of the physical river or legal road unless otherwise shown.

**PAEROA
GENERAL WARD**

