

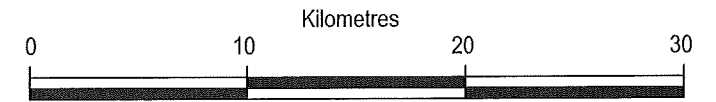
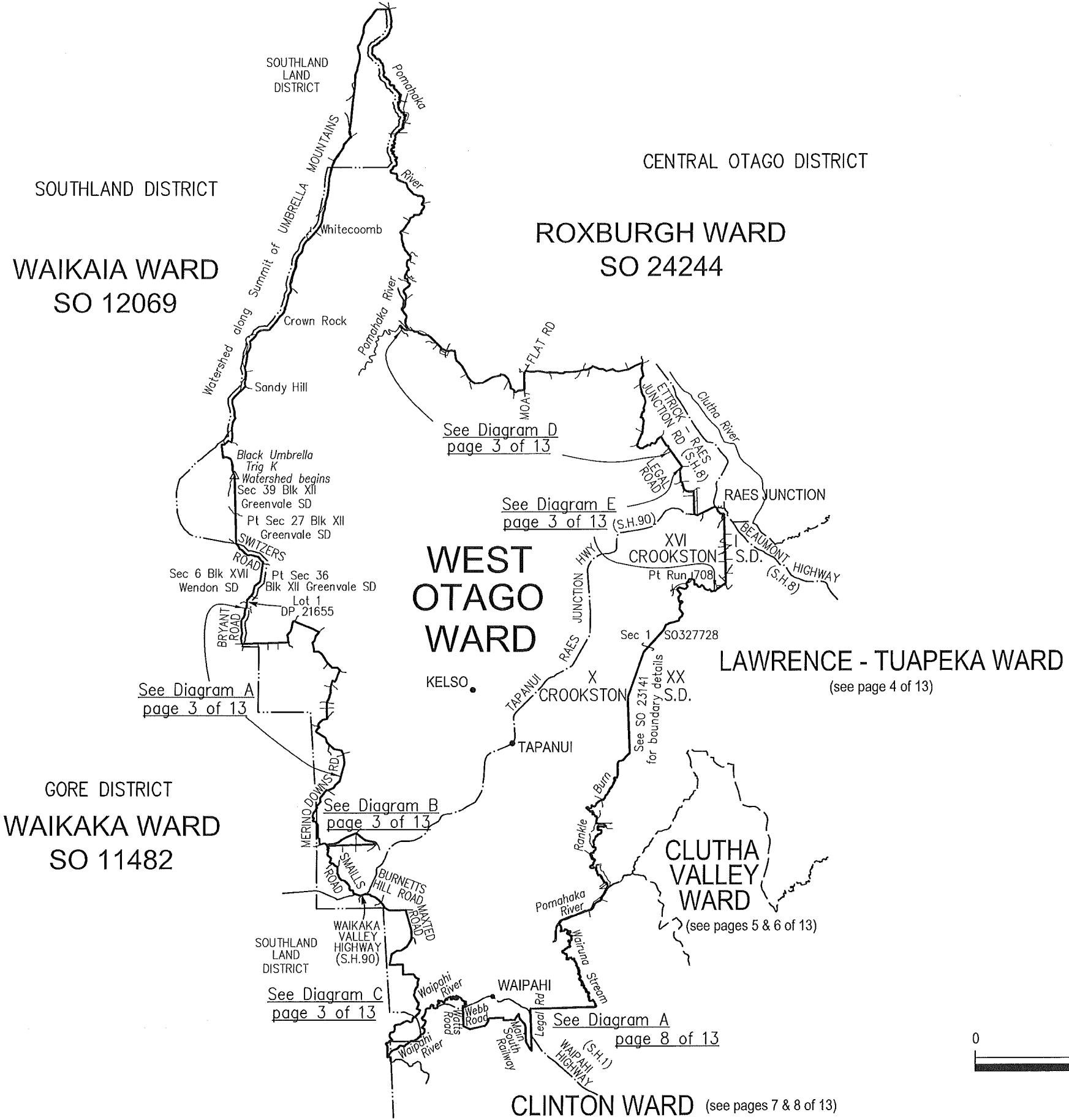
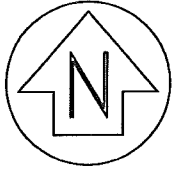
NOTES:

Where a Ward boundary is shown along a river or road it follows the centre of the line of the physical river or the Legal Road (unless otherwise shown).

All seaward boundaries follow the Mean Low Water Springs (MLWS) but cross the mouths of all rivers, streams, inlets and estuaries (unless otherwise shown).

Taieri Island is part of Bruce Ward

S.H. = State Highway (eg S.H. 8)



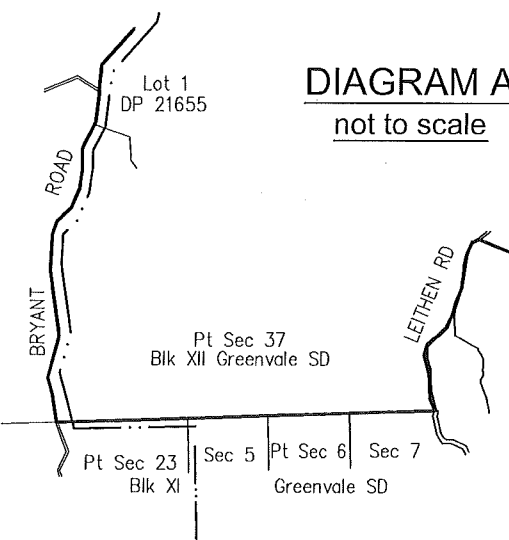


DIAGRAM A
not to scale

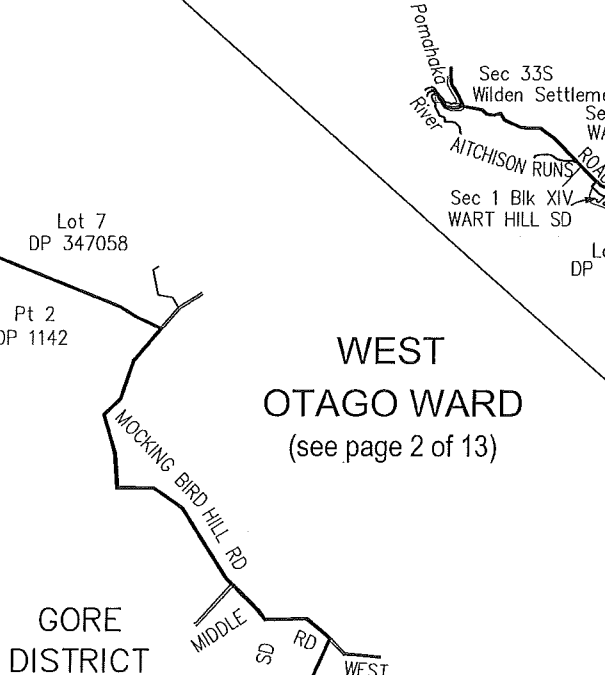


DIAGRAM D
not to scale
CENTRAL OTAGO DISTRICT

WEST OTAGO WARD
(see page 2 of 13)

WEST OTAGO WARD
(see page 2 of 13)

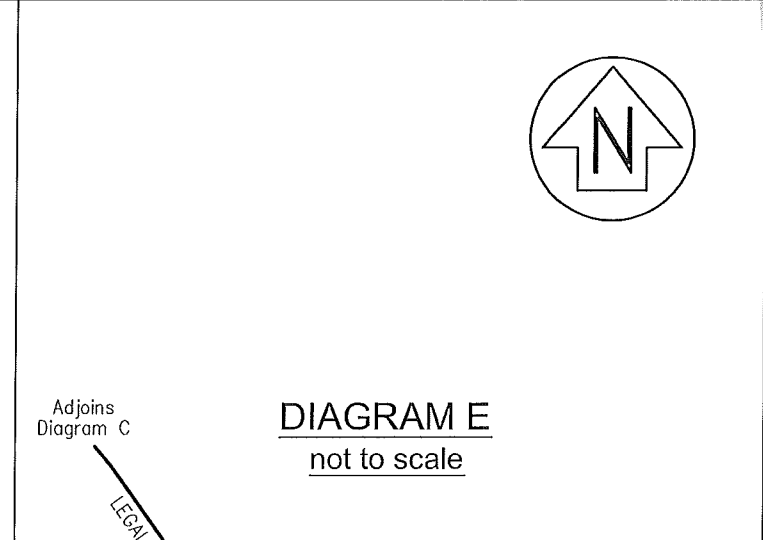
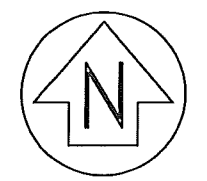


DIAGRAM E
not to scale
CENTRAL OTAGO DISTRICT

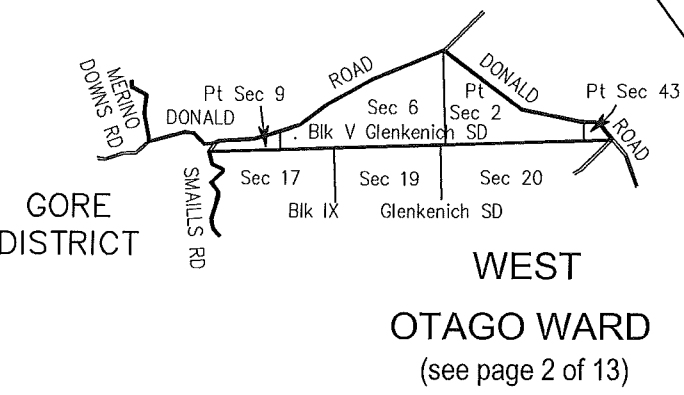
WEST OTAGO WARD
(see page 2 of 13)

LAWRENCE - TUAPEKA WARD
(see page 4 of 13)



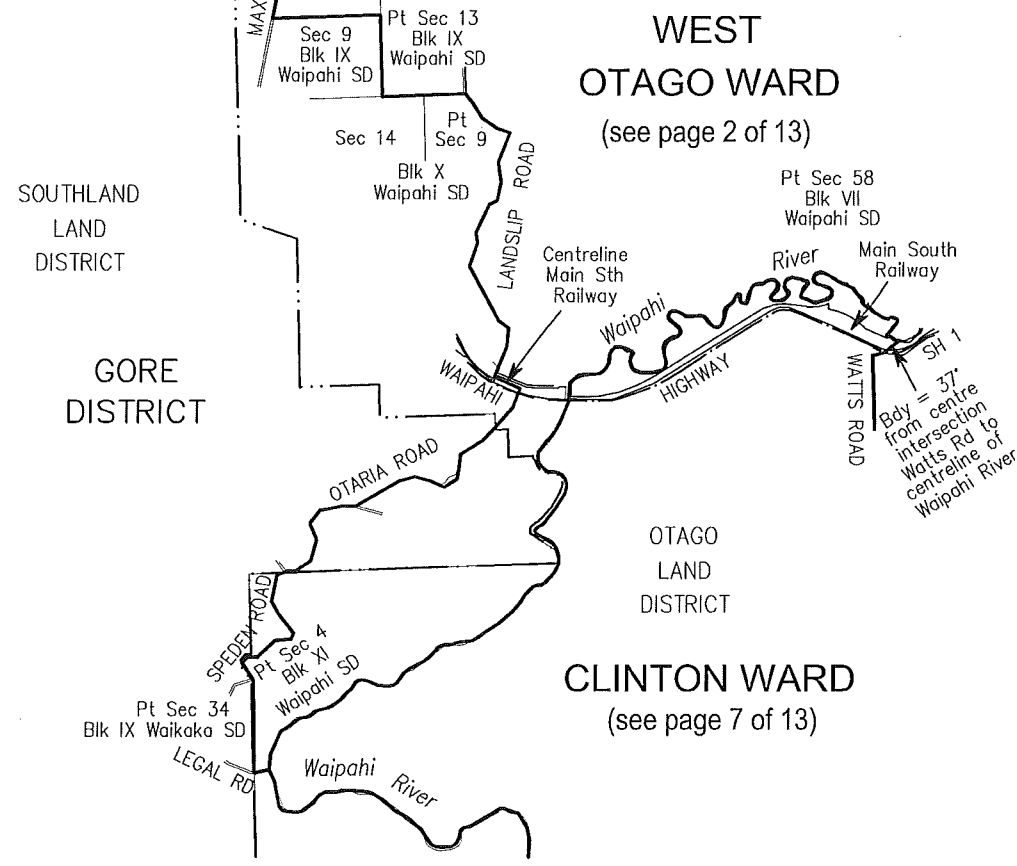
NOTES:
Where a Ward boundary is shown along a river or road it follows the centre of the line of the physical river or the Legal Road (unless otherwise shown).
All seaward boundaries follow the Mean Low Water Springs (MLWS) but cross the mouths of all rivers, streams, inlets and estuaries (unless otherwise shown).
Taieri Island is part of Bruce Ward
S.H. = State Highway (eg S.H. 8)

DIAGRAM B
not to scale
WEST OTAGO WARD



WEST OTAGO WARD
(see page 2 of 13)

DIAGRAM C
not to scale
WEST OTAGO WARD



WEST OTAGO WARD
(see page 2 of 13)

CLINTON WARD
(see page 7 of 13)