

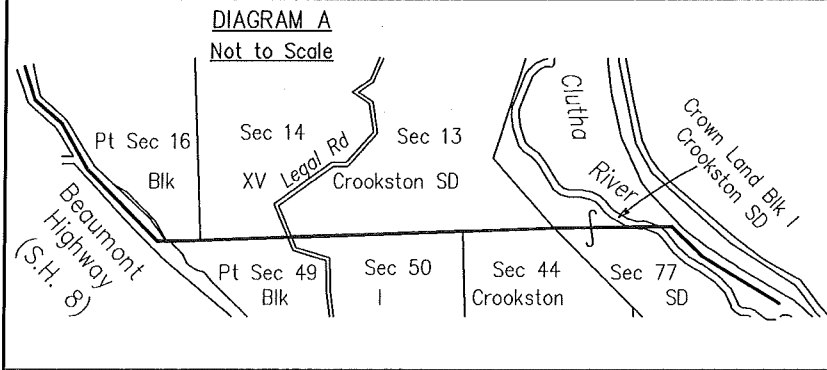
**NOTES:**

Where a Ward boundary is shown along a river or road it follows the centre of the line of the physical river or the Legal Road (unless otherwise shown).

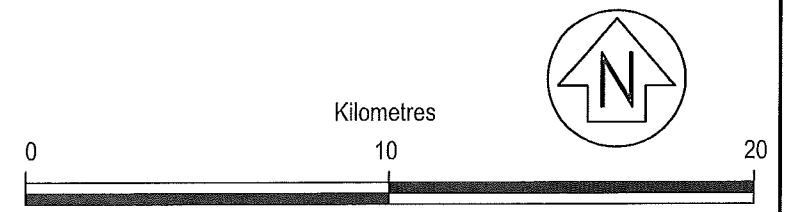
All seaward boundaries follow the Mean Low Water Springs (MLWS) but cross the mouths of all rivers, streams, inlets and estuaries (unless otherwise shown).

Taieri Island is part of Bruce Ward

S.H. = State Highway (eg S.H. 8)



CENTRAL OTAGO DISTRICT  
**MANIOTOTO WARD**  
 SO 24247



DUNEDIN CITY  
**MOSGIEL-TAIERI WARD**  
 SO 430135

**ROXBURGH WARD**  
 SO 24244

**WEST OTAGO WARD**  
 (see pages 2 & 3 of 13)

**LAWRENCE - TUAPEKA WARD**

**BRUCE WARD**  
 (see SO 302016)

**CLINTON WARD**  
 (see pages 7 & 8 of 13)

**CLUTHA VALLEY WARD**  
 (see pages 5 & 6 of 13)

