

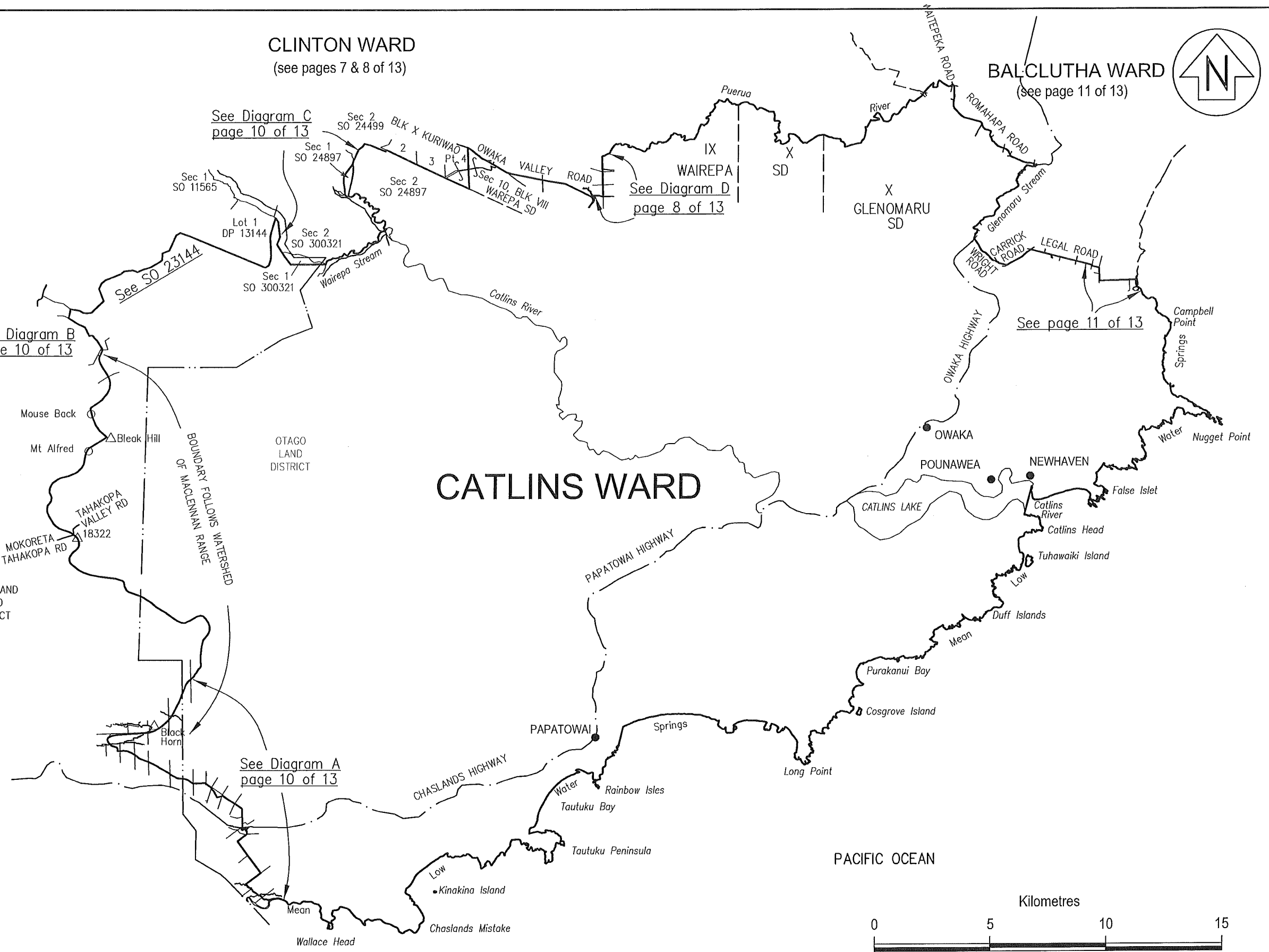
NOTES:

Where a Ward boundary is shown along a river or road it follows the centre of the line of the physical river or the Legal Road (unless otherwise shown).

All seaward boundaries follow the Mean Low Water Springs (MLWS) but cross the mouths of all rivers, streams, inlets and estuaries (unless otherwise shown).

Taieri Island is part of Bruce Ward

S.H. = State Highway (eg S.H. 8)



NOTES:

Where a Ward boundary is shown along a river or road it follows the centre of the line of the physical river or the Legal Road (unless otherwise shown).

All seaward boundaries follow the Mean Low Water Springs (MLWS) but cross the mouths of all rivers, streams, inlets and estuaries (unless otherwise shown).

Taieri Island is part of Bruce Ward

S.H. = State Highway (eg S.H. 8)

DIAGRAM A

Not to Scale

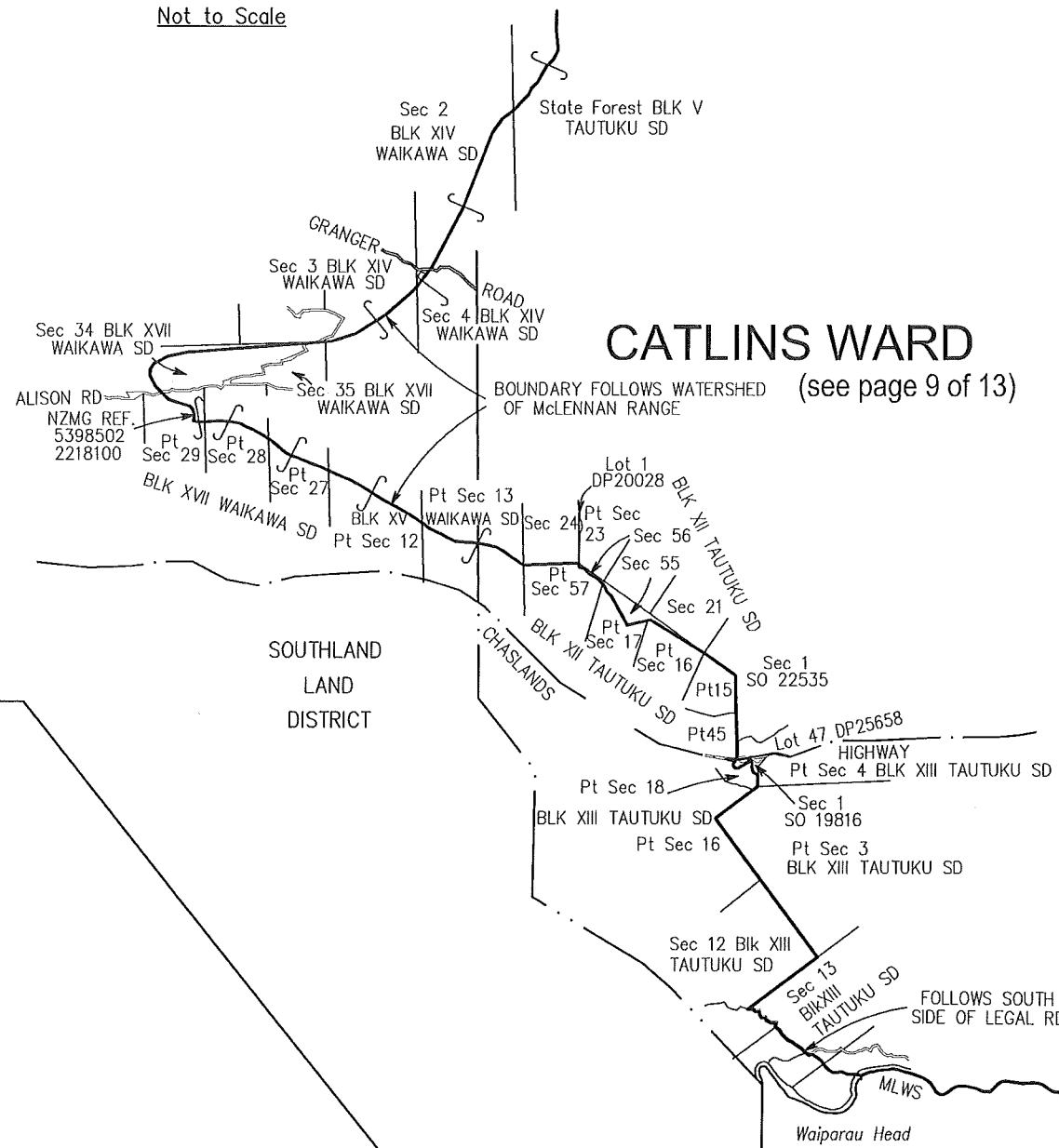
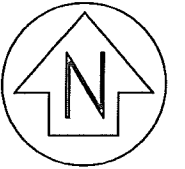


DIAGRAM B

Not to Scale



CATLINS WARD

(see page 9 of 13)

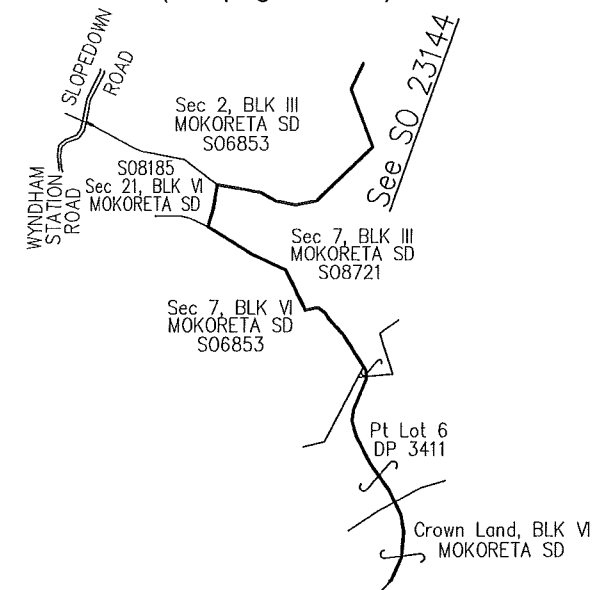
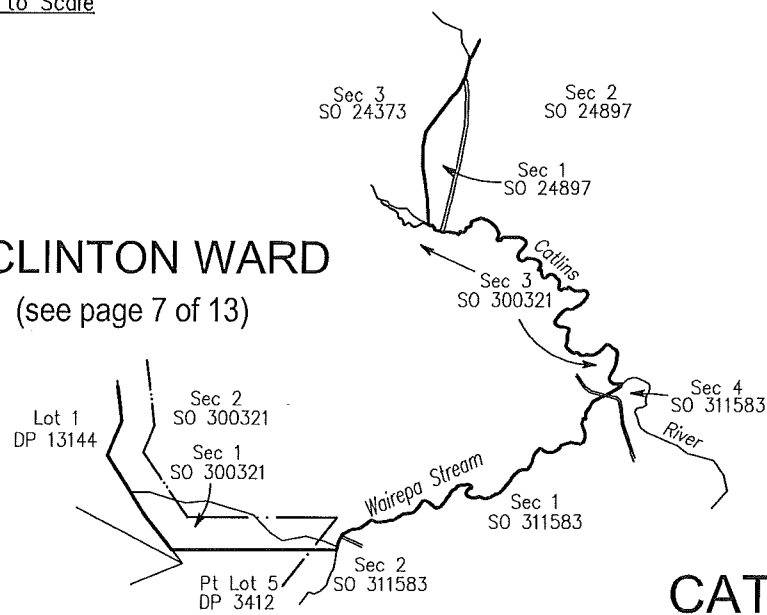


DIAGRAM C

Not to Scale

CLINTON WARD

(see page 7 of 13)



CATLINS WARD

(see page 9 of 13)

**- CLUTHA DISTRICT -
CATLINS WARD**