

- Notes:
1. Coordinates are in terms of New Zealand Transverse Mercator 2000 (NZTM).
 2. Where a boundary is shown along a river or road it follows the middle line of the physical river or legal road unless otherwise shown.
 3. All seaward boundaries follow mean High Water mark but cross the mouths of all rivers, streams, inlets and estuaries unless otherwise shown.
 4. All adjacent islands and islets are included in the Subdivision.

Land District: North Auckland

File IZ049800

FAR NORTH DISTRICT
PAIHIA SUBDIVISION

TERRITORIAL AUTHORITY: Far North District
Compiled by Jacobs New Zealand Limited
Scale 1:85,000 at A3 Date: August 2022

LG-001-2022-S-8
Sheet 1 of 2

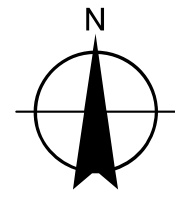
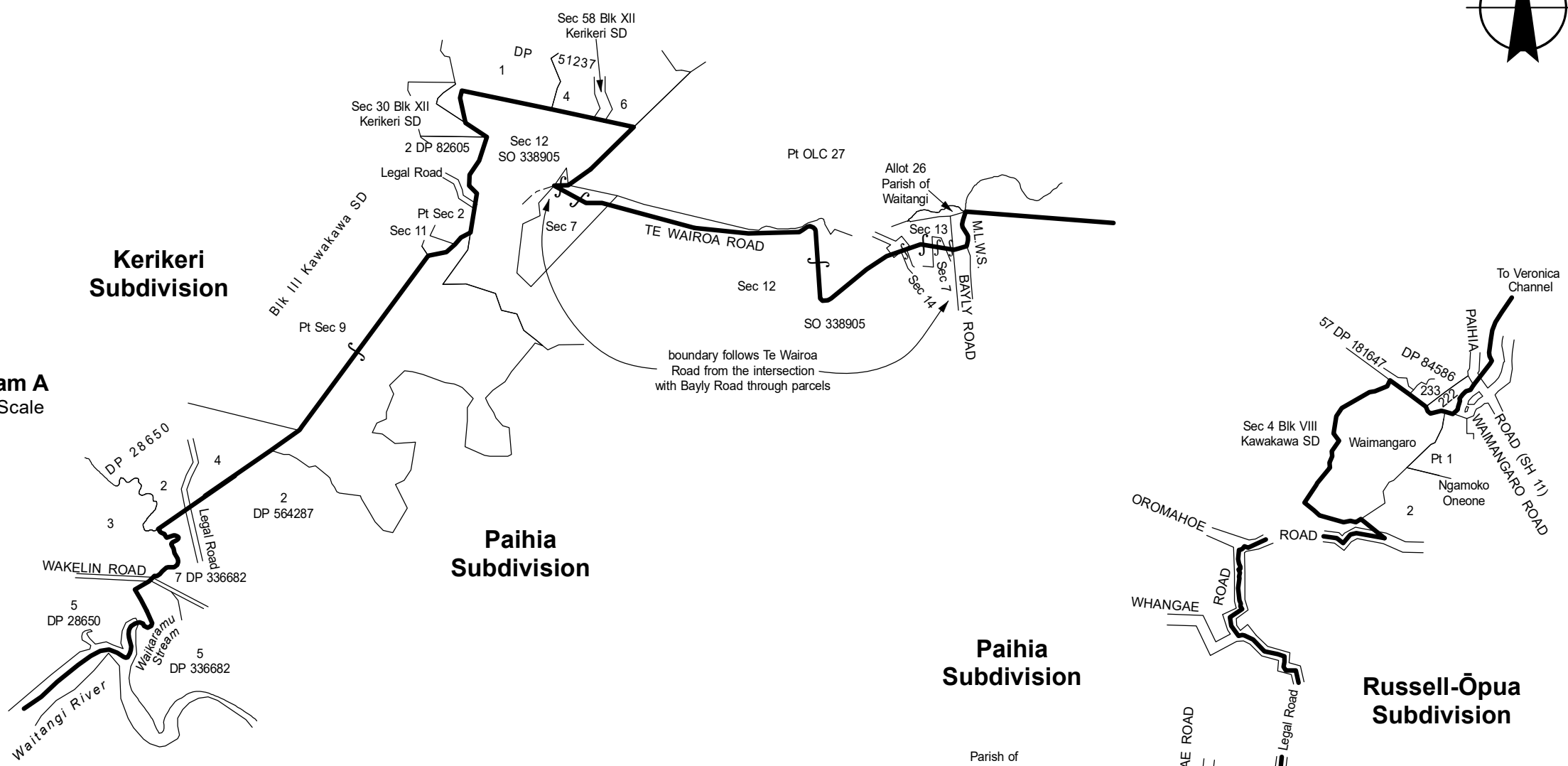


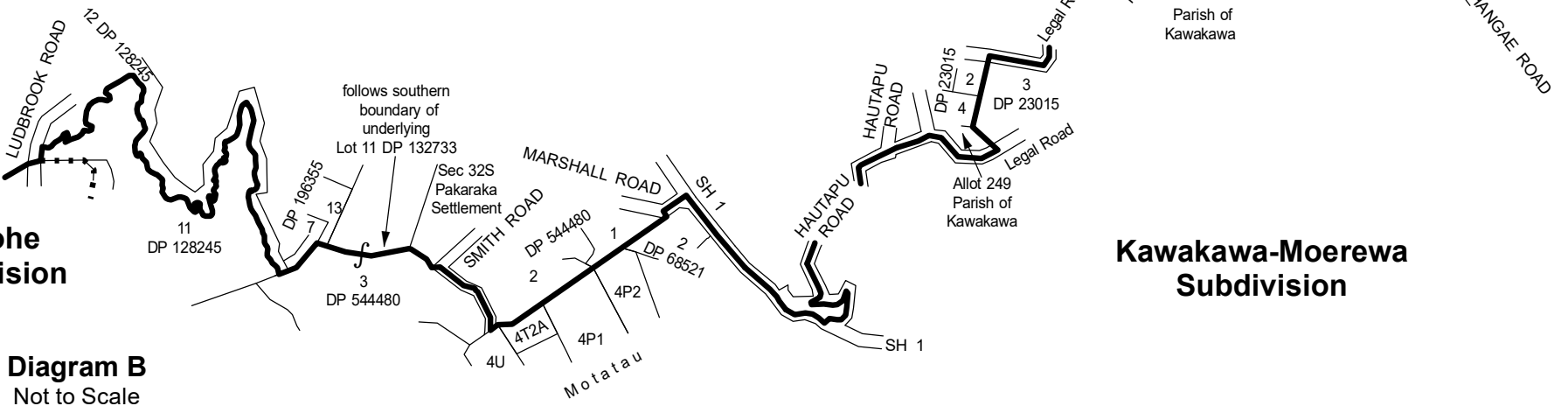
Diagram A
Not to Scale



See
LG-001-2022-S-4

Kaikohe
Subdivision

Diagram B
Not to Scale



Russell-Ōpua
Subdivision

Kawakawa-Moerewa
Subdivision

Land District: North Auckland

FAR NORTH DISTRICT PAIHIA SUBDIVISION

TERRITORIAL AUTHORITY: Far North District
Compiled by Jacobs New Zealand Limited
Not to scale Date: August 2022

LG-001-2022-S-8
Sheet 2 of 2

File IZ049800