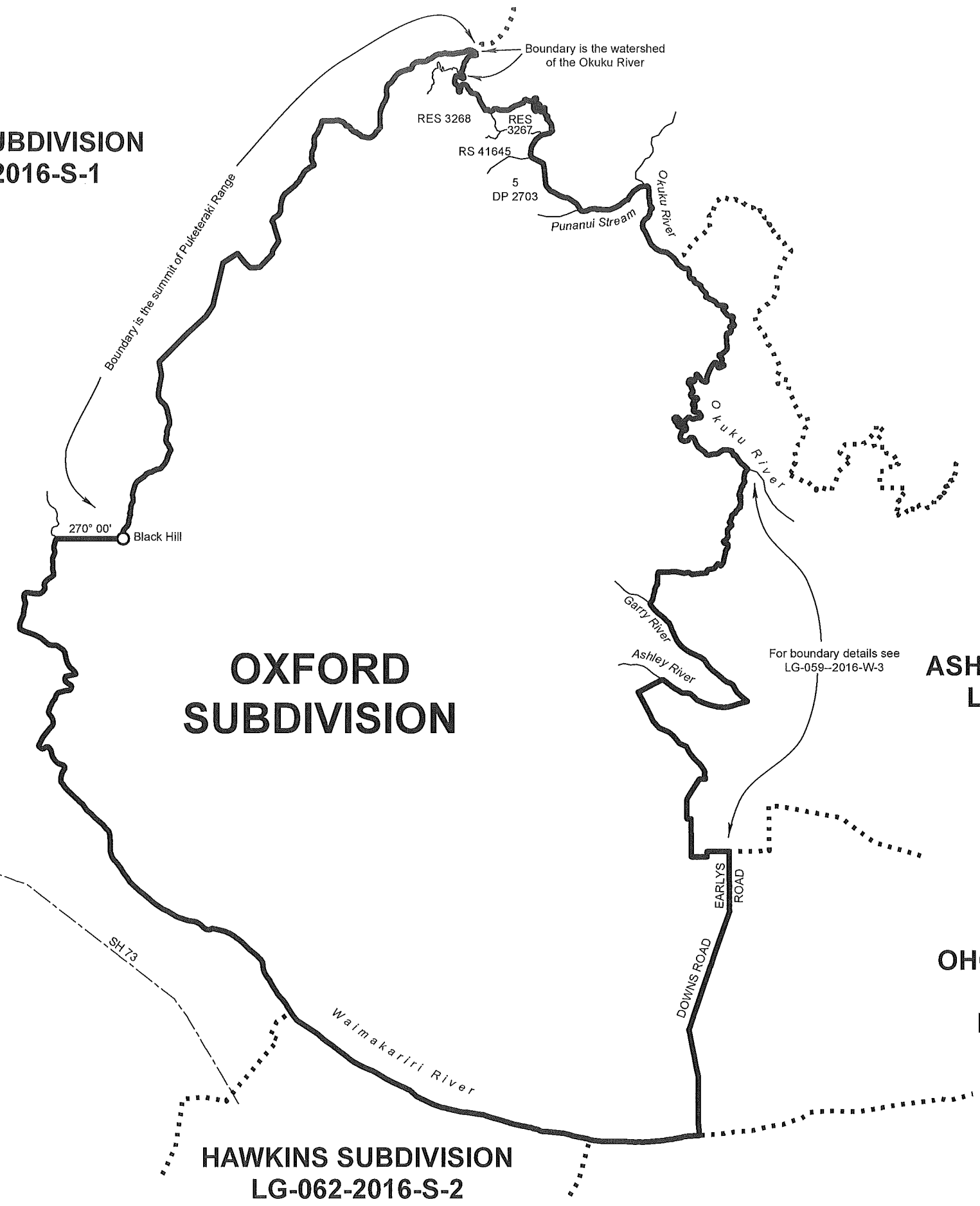


**TAWERA SUBDIVISION  
LG-062-2016-S-1**



- Notes:
1. Coordinates are in terms of New Zealand Transverse Mercator 2000 (NZTM).
  2. Where a boundary is shown along a river or road it follows the middle line of the physical river or legal road unless otherwise shown.
  3. Where a boundary is shown along a railway it follows the middle line of the cadastral railway unless otherwise shown.
  4. All seaward boundaries follow mean low water springs but cross the mouths of all rivers, streams, inlets and estuaries unless otherwise shown.

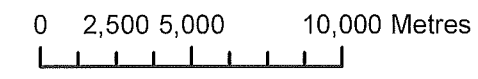


**OXFORD  
SUBDIVISION**

**ASHLEY SUBDIVISION  
LG-059-2016-S-2**

**OHOKA-SWANNANOA  
SUBDIVISION  
LG-059-2016-S-4**

**HAWKINS SUBDIVISION  
LG-062-2016-S-2**



Land District: Canterbury

**WAIMAKARIRI DISTRICT  
OXFORD SUBDIVISION**

TERRITORIAL AUTHORITY: Waimakariri District  
Compiled by Jacobs New Zealand Limited  
Scale 1:250,000 at A3 Date: July 2016

**LG-059-2016-S-3**